



Locksets –  
Nexion® Mechanical Locksets



Nexion Vision  
(External View)

Designed and manufactured in Australia to the highest quality standard, the Lockwood Nexion range has completely changed the face of front door security. Setting the benchmark for safety, security and style, the Nexion range of automatic deadlatches offers the ultimate protection for your home and your family.

Now available in two furniture plate styles, Vision and Classic and a wide range of designer handle options, you can customise your front door suite to suit your own individual sense of taste and style.

Also available in keyless entry version for added convenience. See page 5.106.

The unique **SAFETYRELEASE** feature automatically unlocks the internal handle upon entry, minimising the risk of being locked in.

The Nexion incorporates the unique **LOCKALERT** status indicator that shows the lockset mode at a glance.

The Nexion meets or exceeds the highest security and durability requirements in Australian Standard AS4145.2:1993 when fitted to an exterior quality door. The lockset can operate in three modes: Secure Mode\*, Safety Mode and Passage Mode.

### Secure Mode\*

**Handles securely locked from both inside and outside.**

This mode enables total security when leaving the property. The lockset cannot be opened from the inside without a key.

### Safety Mode

**Handles securely locked from outside and free from the inside.**

This mode prevents unauthorised entry while making it easy to exit the property. A lockout release function is incorporated which automatically changes the lockset to passage mode when the door is opened from the inside. This minimises the chances of being accidentally locked out.

### Passage Mode

**Handles free from both inside and outside.**

The passage mode gives convenient access from inside and outside without the need for a key.

A single cylinder version is available which disables the Secure Mode function and has no internal cylinder function. This means the inside is free to exit at all times.



Nexion Classic  
(External View)

#### LockAlert Indicators



Secure Mode



Safety Mode



Passage Mode

\*Available on double cylinder models only.

Visit [lockweb.com.au](http://lockweb.com.au) for "On Display" video and installation video.

### Features and Specifications

- The Lockset mode is shown by LockAlert with indicator red when in secure mode, yellow when in safety mode and green when in passage mode
- The lock out release feature automatically unlocks the outside handle (i.e. puts the lock into Passage Mode) when the inside handle or snib is operated. This minimises the chance of being accidentally locked out
- Available in 2 furniture plate styles
- Choice of 10 designer lever and 2 knob\* styles
- High security, cut resistant stainless steel latch
- Box strike with concealed crossgrain door frame strengthening screw
- Metal installation template included
- Conforms to the requirements of Australian Standard AS4145.2:1993
- Can be keyed alike to other Lockwood door locks

### Case

- High purity zinc alloy
- Field selectable handing

### Backset

- 60mm standard
- 70mm backset latch available as an accessory

### Latch

Stainless steel 15mm projection.

### Door Thickness

35 to 45mm.

### Cylinders

- Internal and external
- 5 pin tumbler mechanism with 6 pin capability
- Brass cylinders and brass barrels

### Keying

#### Standard Keying

- Supplied individually keyed with two keys per lock
- 78,000 key combinations
- Key blank KB2015P

#### Restricted Special Keying

Lockwood locks can be keyed to a number of controlled and/or specially keyed systems. These range from legally protected keys to protect against unauthorised duplication, which can also include specially designed key systems such as master key systems, which allow for different levels of mechanical access control.



Please refer to section 7 for keying systems or contact your local sales office or customer service for specific information.

### Finishes

Gold	GLD*
Satin Chrome Pearl	SP
Chrome Plate	CP

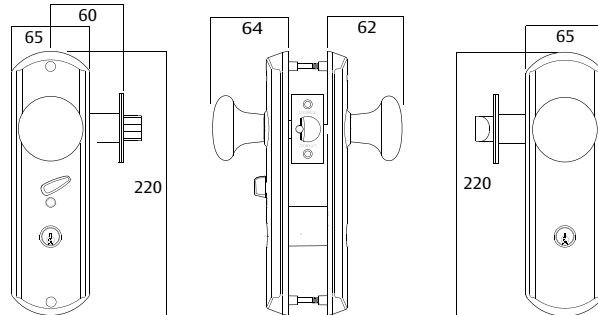
\* Gold finish and knob styles available with Classic version only.

Visit [lockweb.com.au](http://lockweb.com.au) for "On Display" video and installation video.

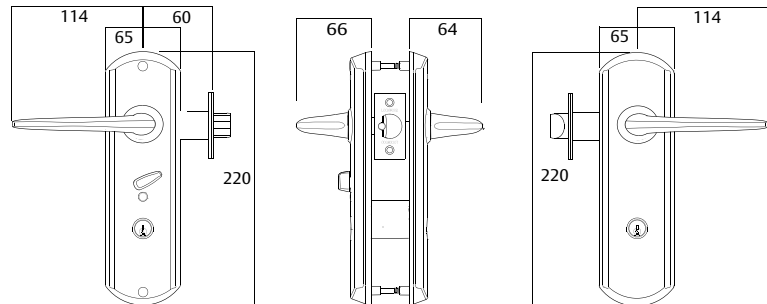
# Locksets

## Nexion<sup>®</sup> Mechanical Locksets – Dimensions

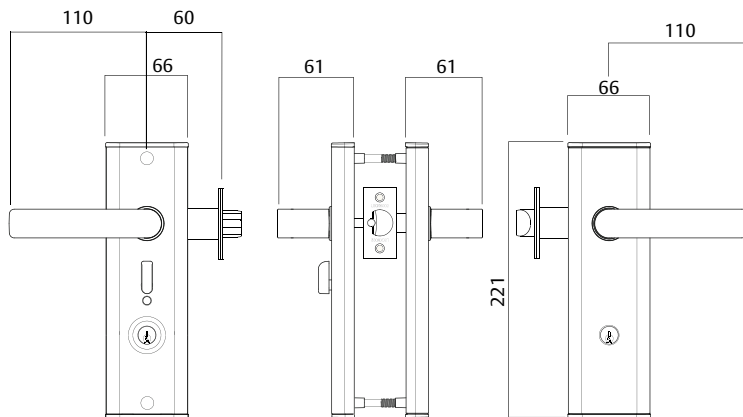
### Classic Plate with Knob (Sphere<sup>™</sup> shown)



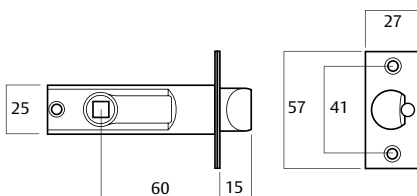
### Classic Plate with Lever (Summit<sup>®</sup> shown)



### Vision Plate with Lever (Element shown)



### Latch Dimensions



### Features and Specifications

- The lockset mode is shown by LockAlert with indicator yellow when in safety mode and green when in passage mode
- Secure mode function is not available with this version
- High security, cut resistant stainless steel latch
- Available in 2 furniture plate styles
- Choice of 10 designer lever and 2 knob\* styles
- Box strike with concealed crossgrain door frame strengthening screw
- Metal installation template included
- Conforms to the security and durability requirements of Australian Standard AS4145.2:1993
- Can be keyed alike to other Lockwood door locks

### Case

- High purity zinc alloy
- Field selectable handing

### Backset

- 60mm standard
- 70mm backset latch available as an accessory

### Bolt

Stainless steel 15mm projection.

### Door Thickness

35 to 45mm.

### Cylinders

- External
- 5 pin tumbler mechanism with 6 pin capability
- Brass cylinder and brass barrel

### Keying

#### Standard Keying

- Supplied individually keyed with two keys per lock
- 78,000 key combinations
- Key blank KB2015P

#### Restricted Special Keying

Lockwood locks can be keyed to a number of controlled and/or specially keyed systems. These range from legally protected keys to protect against unauthorised duplication, which can also include specially designed key systems such



Nexion Classic Single Cylinder  
(Internal View)

as master key systems, which allow for different levels of mechanical access control.

Please refer to section 7 for keying systems or contact your local sales office or customer service for specific information.

### Finishes

Gold	GLD*
Satin Chrome Pearl	SP
Chrome Plate	CP

\* Gold finish and knob styles available with Classic version only.

# Locksets

## Nexion® Mechanical Locksets – Dummy Set

### Features and Specifications

A non-functional handle set installed on the inactive leaf of a double door to enhance the appearance and symmetry of the installation.

Choice of 10 designer lever and 2 knob\* styles.

#### Case

High purity zinc alloy.

#### Door Thickness

35 to 45mm.

#### Finishes

Gold	GLD*
Satin Chrome Pearl	SP
Chrome Plate	CP

\* Gold finish and knob styles available in Classic version only.



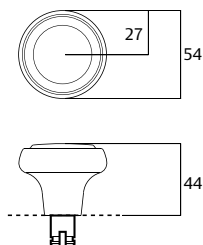
### Crown® – K1\*

#### Dimensions

Diameter: 54mm

Maximum projection: 44mm

\*Only available on Classic version



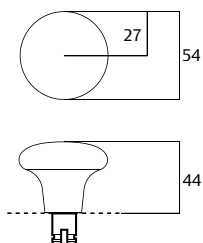
### Sphere® – K2\*

#### Dimensions

Diameter: 54mm

Maximum projection: 44mm

\*Only available on Classic version

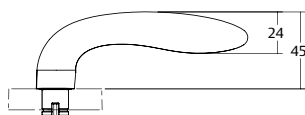
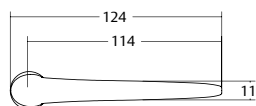


### Summit® – L1

#### Dimensions

Length: 124mm

Maximum projection: 65mm

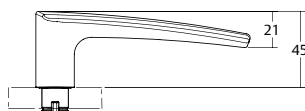
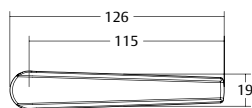


### Spire® – L2

#### Dimensions

Length: 126mm

Maximum projection: 65mm



# Locksets

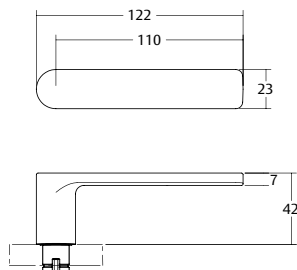
## Nexion® Mechanical Locksets – Handle Options

### Element™ – L3

#### Dimensions

Length: 122mm

Maximum projection: 62mm

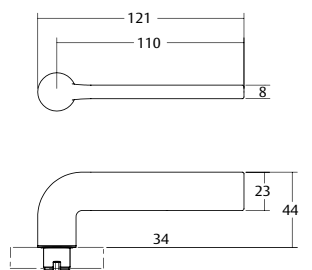


### Glide™ – L4

#### Dimensions

Length: 121mm

Maximum projection: 64mm

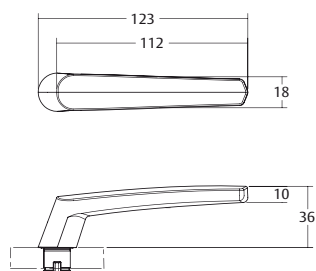


### Aria® #27

#### Dimensions

Length: 123mm

Maximum projection: 56mm

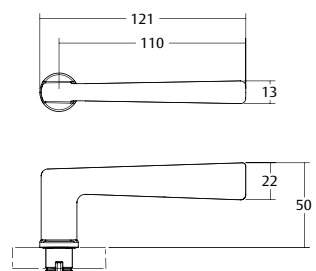


### Hakea® Lever #28

#### Dimensions

Length: 121mm

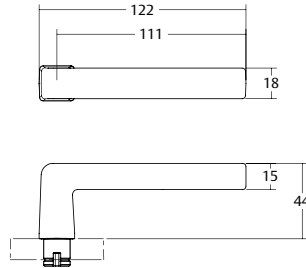
Maximum projection: 70mm





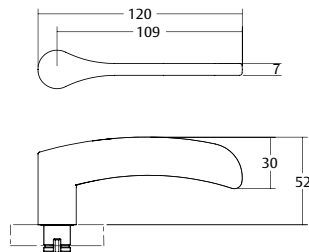
### Acacia® Lever #29

Dimensions	
Length:	121mm
Maximum projection:	64mm



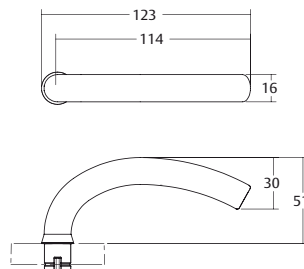
### Saltbush® Lever #34

Dimensions	
Length:	120mm
Maximum projection:	72mm



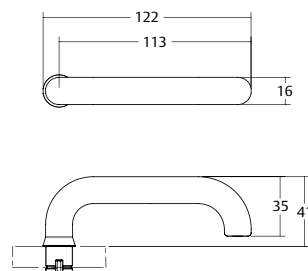
### Mulga® Lever #36

Dimensions	
Length:	122mm
Maximum projection:	71mm



### Gidgee® Lever #37

Dimensions	
Length:	132mm
Maximum projection:	61mm

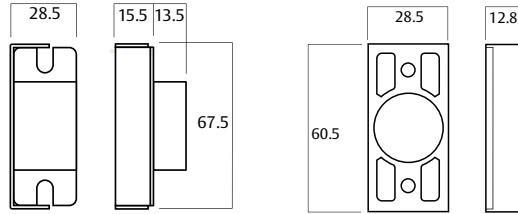


### Rebate Kit

Suitable for rebated doors. Available in trade pack only in Chrome Plate, Satin Chrome Pearl and Gold finishes.

NX8/20###DP – Display Pack

### = Finish Required

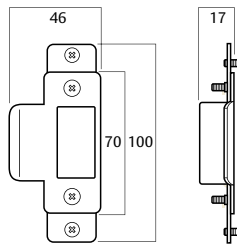


### Metal Frame Strike Kit

For metal frame doors. Available in trade pack only in Chrome Plate, Satin Chrome Pearl and Gold finishes.

NX8/40### – Trade Pack

### = Finish Required



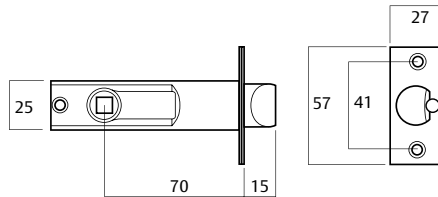
### NX8/70 Latch with 70mm Backset

For installations requiring a 70mm backset.

Available in trade pack only in Chrome Plate, Satin Chrome Pearl and Gold finishes.

NX8/70### – Trade Pack

### = Finish Required



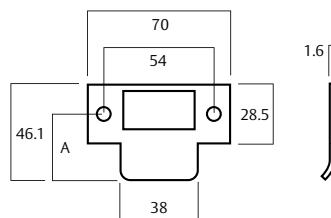
### Standard Finishes

Chrome Plate	CP
Satin Chrome Pearl	SP
Gold	GLD

To order, add finish code to part number.

### Short/Extended Lipped Strike

Finish	"A"	Part Number
SSS	32mm	SP3570-5053
CP, PB	32mm	SP3570-5153
SSS	43.5mm	SP3570-5253
CP, PB	43.5mm	SP3570-5353
SSS	47.5mm	SP3570-5453
CP, PB	47.5mm	SP3570-5653



### Ordering Procedure

Sample part number NX12/1L1GLD is made up of several sections.  
Choose your product by selecting an option from each section.

For example:

Series	Function	Cylinders	Application Options	Knob or Lever	Finish	Keying Options
NX	1	2	1	L1	GLD	

Series	Cylinders	Knob or Lever	Keying Options
Nexion Vision <span style="float: right;">NXV</span>	Dummy <span style="float: right;">0</span>	Crown# <span style="float: right;">K1</span>	Special Keying – Residential Keyed Alike 5P <span style="float: right;">5KA</span>
Nexion Classic <span style="float: right;">NX</span>	Single <span style="float: right;">1</span>	Sphere# <span style="float: right;">K2</span>	Keyed Alike 6P <span style="float: right;">6KA</span>
Nexion Vision Fire Rated <span style="float: right;">NFV</span>	Double <span style="float: right;">2</span>	Summit <span style="float: right;">L1</span>	Project Keyed 5P <span style="float: right;">5PK</span>
Nexion Classic Fire Rated <span style="float: right;">NF</span>		Spire <span style="float: right;">L2</span>	Project Keyed 6P <span style="float: right;">6PK</span>
		Element <span style="float: right;">L3</span>	Restricted Profile 5P <span style="float: right;">5RP</span>

Function	Application Options
Mechanical <span style="float: right;">1</span>	Timber Frame Strike <span style="float: right;">1</span>
Keyless Entry <span style="float: right;">2</span>	Metal Frame Strike <span style="float: right;">3</span>
Dummy <span style="float: right;">4</span>	

Knob or Lever	Finish
Aria <span style="float: right;">27</span>	Gold* <span style="float: right;">GLD</span>
Hakea <span style="float: right;">28</span>	Satin Chrome Pearl <span style="float: right;">SP</span>
Acacia <span style="float: right;">29</span>	Chrome Plate <span style="float: right;">CP</span>
Saltbrush <span style="float: right;">34</span>	
Mulga <span style="float: right;">36</span>	
Gidgee <span style="float: right;">37</span>	

Refer to page 5.106 for Nexion Keyless Entry product information.

\* Gold finish and knob styles available in Classic version only.

### FIRE RATED

The locksets can be optioned to suit fire door sets with a fire resistance level of up to 1 hour. These locksets are optioned by substituting NX to NF in the part number. As well as changes to the furniture plate mechanism, the standard latch is replaced by the 530 Series Latch. The NF series comes complete with all components required and is suitable for door thicknesses 35 to 48mm. The standard Nexion Series is not suitable for fire door applications.

ASSA ABLOY is the global leader in door opening solutions, dedicated to satisfying end-user needs for security, safety and convenience



Lockwood is the leading brand in the Australian locking industry. With an established reputation for high quality products, this iconic brand provides a wide range of locking solutions to residential housing, commercial building and industrial application markets. Lockwood is supported by an extensive distribution and after-sales support network. Our customers include retailers, architects, trade and industrial personnel, locksmiths and security dealers.



ASSA ABLOY is the global leader in door opening solutions, dedicated to satisfying end-user needs for security, safety and convenience.

ASSA ABLOY is represented in all major regions, in both mature and emerging markets, with leading positions in Australia, Europe and North America.

As the world's leading lock group, ASSA ABLOY offers a more complete product range of door opening solutions than any other company in the market.

**Australia**  
**1300 LOCK UP (1300 562 587)**  
**lockweb.com.au**

**New Zealand**  
**+64 9415 7111**  
**assaabloy.co.nz**

ASSA ABLOY Australia Pty Ltd  
235 Huntingdale Road  
Oakleigh, Victoria, 3166  
Australia

info.au@assaabloy.com  
assaabloy.com.au

ASSA ABLOY New Zealand Ltd  
6 Armstrong Road  
Albany, North Shore City, 0632  
New Zealand

info.nz@assaabloy.com  
assaabloy.co.nz

